



**REAL ESTATE
MORTGAGE
CREDIT REPORTS**

**Half - Full
Program!**



Providence Companies is your *one stop shop* for Real Estate, Mortgage Lending and Credit Reporting services.

In the next few slides I will walk you through a tour of our proven marketing plan and show how we at Providence Realty go to work for you to “get your home sold, for top dollar and put more money in your pocket”. We have found this strategic plan to be very effective in getting homes sold and fulfilling your needs.

We are a full service company from start to finish. At a time when too many compare the real estate market to a glass of water that is **half empty**, we see it as **Half-Full**.

Although homes are on the market longer than they were the past few years, homes are still being sold and the mortgage rates are still low!

We have developed an exciting new program called the **HALF-FULL** program, a plan which gets your home sold by a **full service** firm for **half the cost**.





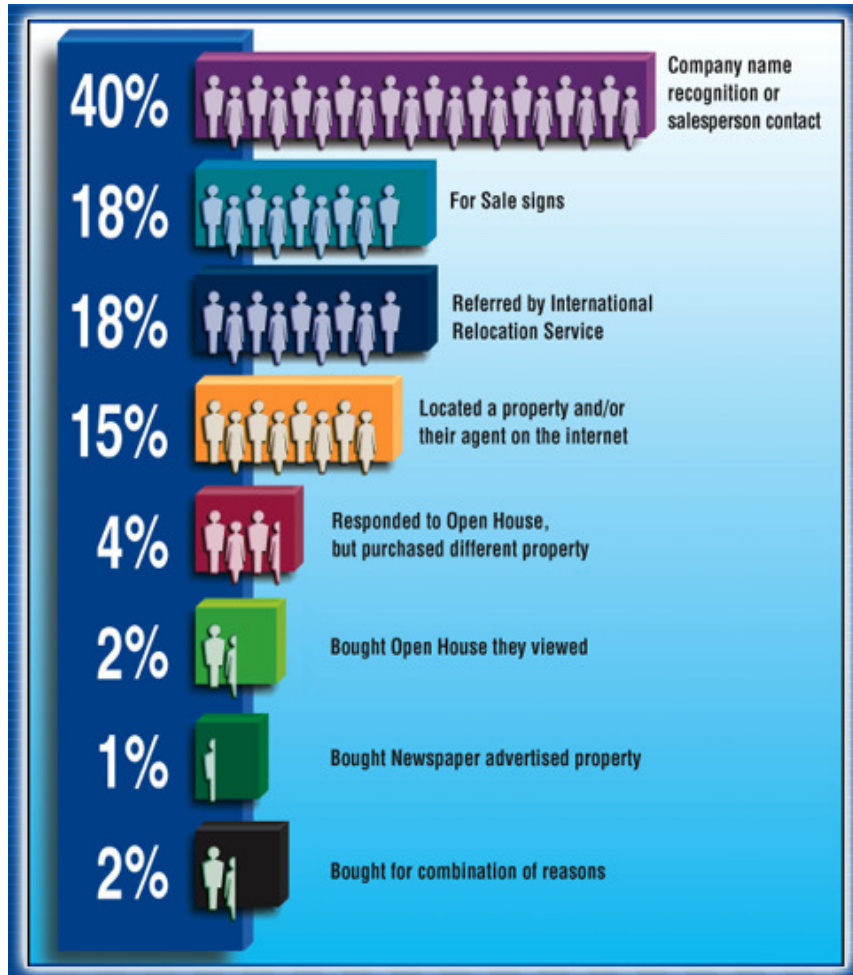
**REAL ESTATE
MORTGAGE
CREDIT REPORTS**

**Half - Full
Program!**



**Where do buyers
come from?**

*As you can see,
hiring me, my
company, and using
the internet will most
likely find the best
buyer for your
house.*





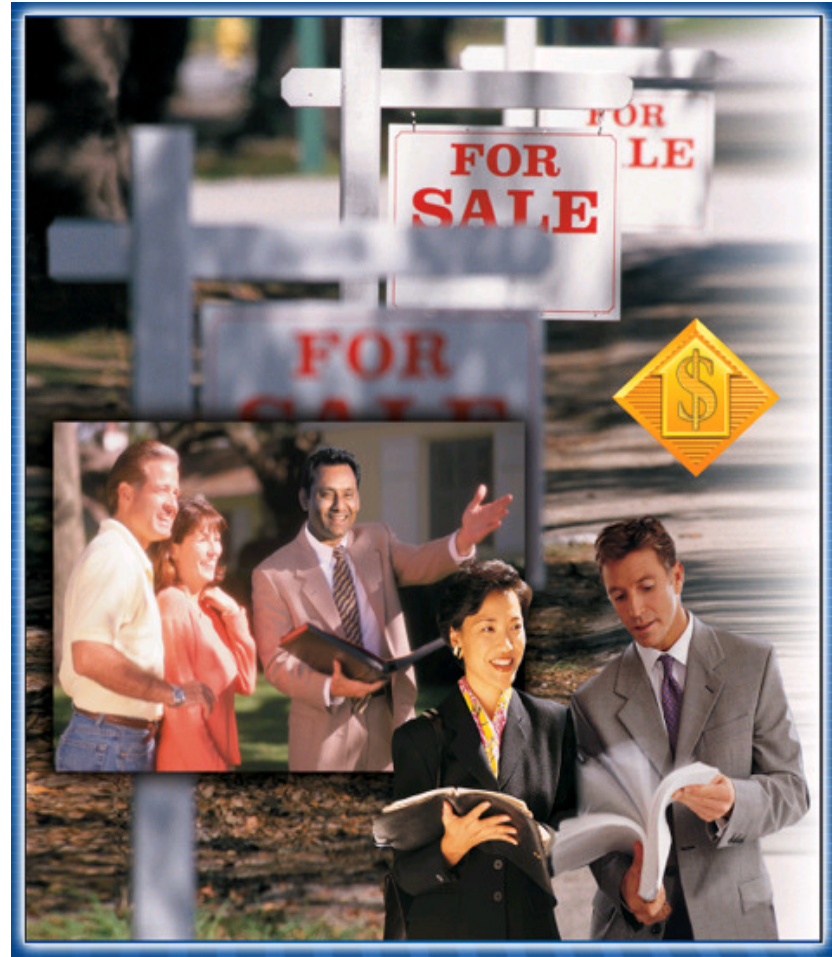
**REAL ESTATE
MORTGAGE
CREDIT REPORTS**

**Half - Full
Program!**



**What can you expect
when you hire us?**

*A combination of top
notch Real Estate
Sales Professionals
and proven marketing
plan to sell your house
for top dollar at a
LOWER COST.*





**REAL ESTATE
MORTGAGE
CREDIT REPORTS**

Half - Full
Program!



**PROVIDENCE
REALTY** only offers
Full Service

*The HALF-FULL
Program offers Full
Service for half the
PRICE!*

Wisconsin Listing	WIS-MLS
Illinois Listing	IL-MLS
Flyers	Multi Photos
Internet Syndication	Print Ads
Exclusive Network Marketing	Sentilock Security Lock Box
Yard Sign	Earnest Money
Offer Negotiations	Showings Schedule
Inspections	Closing Review
Title review	WEB Site & more!



**REAL ESTATE
MORTGAGE
CREDIT REPORTS**

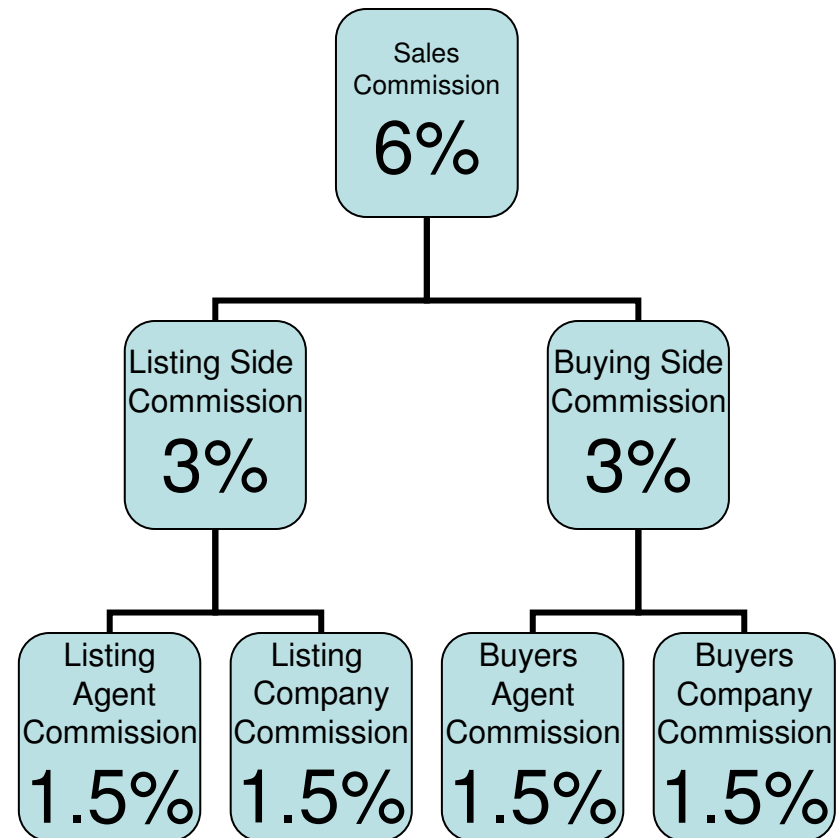
**Half - Full
Program!**



Typically the commission paid is split 4 ways

The HALF-FULL Program cuts the Listing side commission in HALF or LESS!

It still allows the buyers agent to get his full commission!





**REAL ESTATE
MORTGAGE
CREDIT REPORTS**

**Half - Full
Program!**



The
HALF-FULL
Program

*•Net more
DOLLARS*

or

*•Reduce your
asking price*

Asking/Sale Price		\$200,000	New List Price?
Common Real Estate Commission Fee	6.0%	\$12,000	
In Your Pocket		\$188,000	
HALF/FULL Program Listing Fee	1.5%		
Common Cooperating Broker Fee	2.4%		
Total Commission	3.9%	\$7,800	
Savings		\$4,200	
In Your Pocket		\$192,200	\$195,800
HALF/FULL Cooperating Fee	1.4%		
Total Commission	2.9%	\$5,800	
Savings		\$6,200	
In Your Pocket		\$194,200	\$193,800



**REAL ESTATE
MORTGAGE
CREDIT REPORTS**

**Half - Full
Program!**



**Full Service comes with
a Full Service
Guarantee!**

*In order for us to offer you
this incredible deal -
GUARANTEED – you must
qualify.*

*Call or email us to set an
appointment and get ready to
move!*

**262-658-9000 or email
lcappozzo@ProvidenceCompanies.com**

